



## Soil Stabilization Spreaders Open-top Models



Model SSOT 80

## High volumes. Low dust.

*The versatile Stoltz Site Spreader is all you'll ever need for spreading these cementitious and pozzolanic materials:*

- Portland cement
- Quicklime
- Hydrated lime
- Bentonite
- Cement kiln dust
- Flyash

**Application rates to 30 lb per sq.yd. at 2 mph with a level 8, 10 or 12 ft wide pattern.**

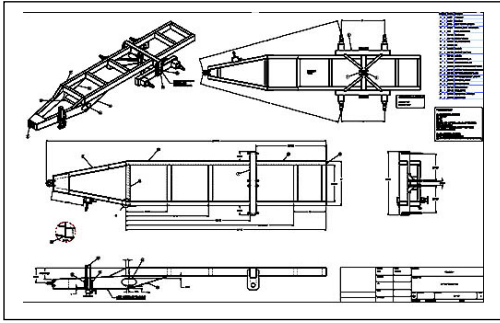
### Standard Features:

- 30-inch wide PTO drag chain
- Hydraulic spreading auger
- Hydraulic or manual rear metering gate
- 9-inch by 8-foot spreading auger
- Dust curtains around auger to keep material contained while spreading.
- Clevis hitch or pintle hitch
- Walking beam suspension
- Break-away auger assembly

### Available options:

- Auxiliary engine for towing without a tractor.
- Spray system for dust suppression.
- Grate to hold bulk bags while filling

# Greater reliability, longer life, faster payback



## Engineered for maximum strength

With computer aided design, tolerances are tighter and parts and assembly are more consistent.



## Built with the best components

We purchase the best parts and steel, and assemble them according to the engineering drawings.



## Tested for precision spread patterns

In addition to a long lasting spreader, you want an accurate and reliable spreader.



Model SSOT 1516

Specification:	Model SSOT 80	Model SSOT 1516
Maximum Rated Load (tons)	8	15
Hopper Capacity (cu.ft)	177	225
Hopper Capacity (cy)	6.5	8.3
Hopper Length	10'	16'
Hopper Width	78"	74"
Hopper Depth	45"	37"
Overall Length	18'	24'
Overall Width (w/o Auger)	94"	104"
Overall Height	87"	78"
Standard Tire Size	19.5Lx16.1, 8 ply	21.5Lx16.1, 14 ply
Wheel Track (centerline)	75"	80"
Approx. Empty Weight	4,500	5,700



**Stoltz Mfg., LLC**  
 Morgantown, PA USA 19543  
**800-843-8731**  
[www.cementspreaders.com](http://www.cementspreaders.com)